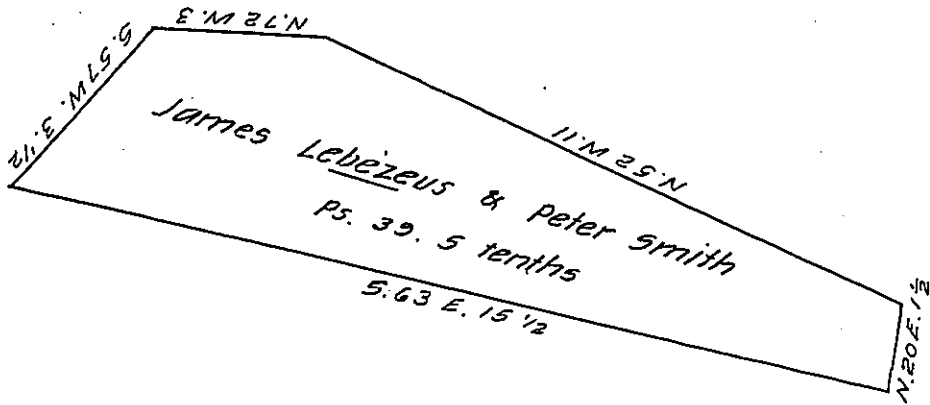


W

York County Shore



Lancaster County Shore

A Draught of Gulph Island situate in Martie Township Lancaster County opposite the Land of Thomas Neal on the Lancaster Shore about thirty five perches West of said Land about eight perches North of Willow Island about twenty East of Bear Island and about twenty five perches South of deep water Island, containing thirty nine perches & five tenths strict Measure. Surveyed in pursuance of a Warrant dated the 14th day of August A. D. 1818 granted to James Lebezeus & Peter Smith

To Jacob Spangler Esq^r
Surveyor General

pr. Jacob Hibshman D.S

IN TESTIMONY that the above is a copy of the original remaining on file in the Department of Internal Affairs of Pennsylvania, made conformably to an Act of Assembly approved the 16th day of February, 1833, I have hereunto set my Hand and caused the Seal of said Department to be affixed at Harrisburg, this second day of October 1905

Jacob D. ...
Secretary of Internal Affairs.